



MENU



Plinth Collection
by Norm Architects

Meet the Plinth Collection



MENU's Plinth collection reimagines the much mused-over podium. Equal parts beautiful and timeless, multi-functional platforms for the home, office or showroom profile the beauty of marble and the uncompromising precision of our craftsmanship. Each component is carefully selected and crafted by hand in Portugal, joined seamlessly together to reveal the inherent beauty of the natural material. The sharp, clean silhouette of each Plinth stands in striking contrast to the unique veining of the light-reflecting marble.

Eave Modular Sofa, Corner, Pouf, Middle, City Velvet CA7832/039, by Norm Architects
Plinth Tall, Brown Grey Marble, by Norm Architects
Plinth Low, Brown Grey Marble, by Norm Architects
Plinth Cubic, Brown Grey Marble, by Norm Architects
Échasse Vase, Small, Brushed Brass/Smoke Glass, by Theresa Rand
Échasse Bowl, Large, Brushed Brass/Smoke Glass, by Theresa Rand
Gravel Rug, Light Grey, by Nina Bruun



Nimbus Mirror, Bronzed Brass , by Krøyer-Sætter-Lassen
Plinth Low, Rose Marble, by Norm Architects
Duca Candleholder, Bronzed Brass, by Krøyer-Sætter-Lassen

Gravel Rug, Light Grey, by Nina Bruun
Offset 3-seater Sofa, Savanna 202, by Norm Architects
Circular Bowl, Alabaster/Cloud Stone, by Alexa Lixfeld

About Norm Architects

Founded in Copenhagen in 2008 by Jonas Bjerre-Poulsen and Kasper Rønn, Norm Architects specialises in residential architecture, commercial interiors, industrial design, photography and art direction. Today, the group regularly collaborate with MENU, helping to drive the evolution of the brand and its products.

Norm Architects' name reflects the company's emphasis on the importance of drawing inspiration from norms and

traditions within architecture and design – in particular the Scandinavian design principles of timeless aesthetics and natural materials and the modernist values of restraint and refinement.

Guided by these principles, Norm Architects produces design that unites great materials and craftsmanship, while embodying beauty, traditions, history and, most importantly, timeless simplicity, where there is nothing more to add or take away.



About MENU

AT MENU, WE BELIEVE IN CONNECTED SPACES: SPACES THAT UNITE OUR WORLD THROUGH DESIGN AND MAKE OUR TRANSITIONS FROM ONE PLACE TO ANOTHER SEAMLESS, INTERESTING AND ENJOYABLE.

In our rapidly changing landscape, the distinctions between home and work have become blurred. The concept of Connected Spaces reflects this exciting shift, highlighting the opportunity to create human-centric, multi-functional environments that serve our needs: workplaces that make us feel at home; homes with all the comfort and refinement of boutique hotels; cafés, shops, restaurants and hotels that feel curated to our desires and aspirations.

Connected Spaces is a testimony to the future of design. By connecting the dots between home, work and hospitality, we can redefine how we use space and, ultimately, how we connect to one another. Designing ideal spaces is a journey. There is no roadmap.

Today, MENU's designs can be found across the globe. To make sure our product portfolio continues to anticipate people's needs and offer a breadth of ideas and solutions, we partner with contemporary talents both in our native Scandinavia and around the world. At the same time, our collection is also growing to include more legacy designers whose work has stood the test of time and serves as a reminder of what it means to be a modern classic.

Plinth Tall, Black Marble, by Norm Architects
Socket Occasional Lamp, Brushed Brass, by Norm Architects





Offset 3-seater Sofa, Savanna 202, by Norm Architects
 Plinth Low, Rose Marble, by Norm Architects
 Plinth Tall, Rose Marble, by Norm Architects
 Column Table Lamp, Bronze, by Norm Architects

MENU at The Audo



MENU's new showroom is located at The Audo, a unique concept that masterfully unites co-working and event facilities, a café, restaurant and retail area, as well as an exclusive residence in a single, community-building universe.

MENU's portfolio of furniture, lighting and accessories are presented and experienced here in new and authentic ways.

Redefining how we use design, space and, ultimately, how we connect to one another, the creative destination is a hub for powerful ideas, beautiful design and inspiration.

TR Bulb Table/Wall Lamp, Brushed Brass/ Matte Opal, D1W, by Tim Rundle
 Plinth Low, Rose Marble, by Norm Architects
 Tearoom Lounge Chair, Dedar Schwarzwald, by Nick Ross
 Circular Lamp, Black, by Studio WM
 Harbour Column Dining Table, Ø80, Estremoz Marble, by Norm Architects

Plinth Cubic

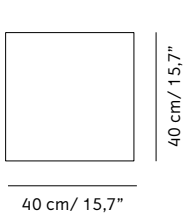
A favoured medium of the Greeks and Romans in both architecture and art, marble has come to symbolise elegance and sophistication. Plinth builds upon that essence, using marble as a means to showcase other items, as well as standing as a sculptural item on its own.

This perfectly symmetrical cube is an ideal bedside table or occasional table, revealing a piece of quality and beauty.

Available in four unique colourways.



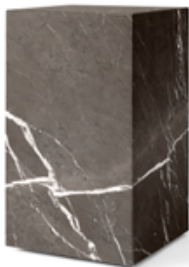
PLINTH CUBIC
Category: Coffee/Side Table
H: 40 cm/ 15,7", W: 40 cm/ 15,7", L: 40 cm/ 15,7"



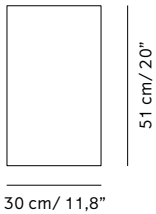
Plinth Tall

Shaped as a traditional plinth on which favourite objects such as a plant, bust, vase or lamp can be displayed, this tall, traditional design utilises simple shapes and the highest possible quality control, allowing the inherent beauty of the marble to speak for itself. Each naturally-occurring rock is created over time by nature and the unique and colourful veins make marble so special.

Available in four unique colourways.



PLINTH TALL
Category: Coffee/Side Table
H: 51 cm/ 20", W: 30 cm/ 11,8", L: 30 cm/ 11,8"



Plinth Low

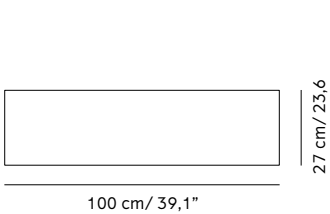
As versatile as it is timeless, the low Plinth serves the dual purpose of being a beautiful, sculptural piece on its own and highlighting whatever objects rest upon it.

Handcrafted in Portugal, each piece of marble is carefully selected and shaped into a perfectly aligned rectangle, ideal as a statement-making coffee table. The honed marble carries an air of sophistication and elegance to elevate any space.

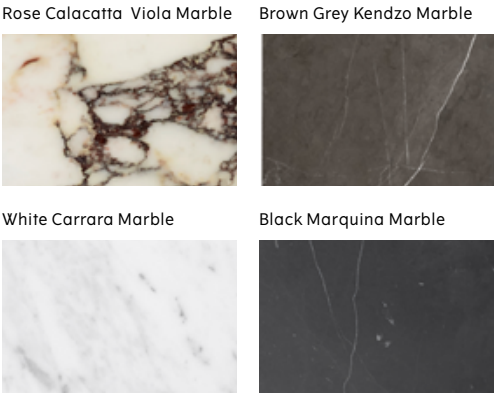
Available in four unique colourways.



PLINTH TALL
Category: Coffee Table
H: 27 cm/ 23,6", W: 60 cm/ 23,6", L: 100 cm/ 39,1"



ALL PLINTHS ARE AVAILABLE IN FOUR UNIQUE COLOURWAYS



Plinth Tall, Rose Marble, by Norm Architects





Each piece of carefully selected marble is assembled by hand to ensure that the sides line up perfectly. The result — podiums that are consistent in shape and quality while unique in marbling pattern.



DESIGN FEATURES

The Plinth Collection is handcrafted in Portugal, making each piece unique.

Each piece of carefully selected marble is assembled by hand to ensure that the mitered corners line up perfectly.

The monumental, multi-functional design lends itself to a variety of uses and spaces.

The beauty of natural marble is revealed with unique veining and a light-reflecting finish.

Quality-tested and surface treated to ensure long-term durability; ideal for both contract and residential use.

Plinth Cubic, Brown Grey Marble, by Norm Architects
Plinth Tall, Brown Grey Marble, by Norm Architects
Plinth Low, Brown Grey Marble, by Norm Architects

Knitting Chair, Waxed Stained Solid Oak/Dakar Leather 0311, by Ib Kofod-Larsen
Offset 3-seater Sofa, Colline 228, by Norm Architects
Échasse Vase, Small, Bronzed Brass/Clear Glass, by Theresa Rand
Plinth Low, Brown Grey Marble, by Norm Architects
Plinth Tall, Brown Grey Marble, by Norm Architects
Plinth Cubic, Brown Grey Marble, by Norm Architects
TR Bulb Table/Wall Lamp, Marble/Matte Opal, by Tim Rundle



MATERIALS & PRODUCTION

Though the lines of the podiums are sharp and clean, the naturalness of the marble is at the forefront of its visual identity, creating an intriguing contrast within each piece. From a side table in a private home to a place to display a vase of flowers in a restaurant, Plinth podiums provide an unparalleled surface.

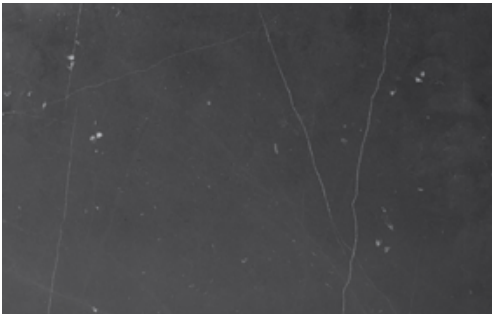
MARBLE OPTIONS



Rose Calacatta Viola Marble



White Carrara Marble



Black Marquina Marble



Brown Grey Kendzo Marble

Plinth Tall, Rose Marble, by Norm Architects
Willmann Vase, by Hanne Willmann





Plinth Tall, White Marble, by Norm Architects
TR Bulb Table Lamp, Shiny Opal/Grey Marble, by Tim Rundle

